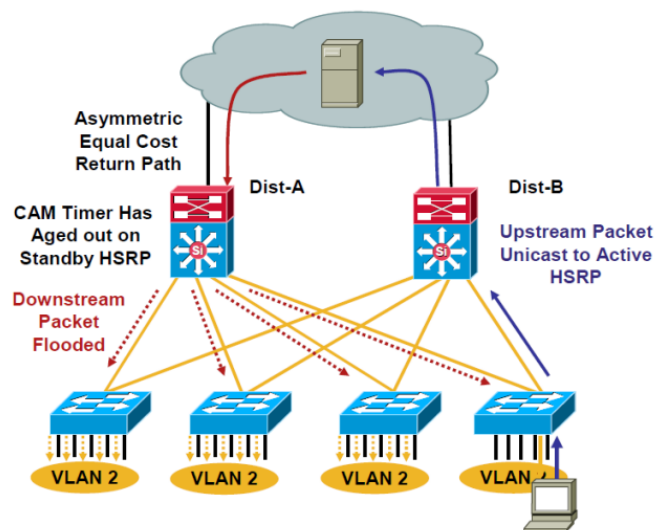


## Explanation of Term (42%)

1. Bridge Assurance:
2. Autonomous System Border Router (ASBR):
3. Stub AS:
4. Flow Visor:
5. Global Load Balancing Protocol (GLBP):
6. Border Gateway Protocol (BGP):

## Questions (65%)

1. Please describe all the areas and the LSAs of OSPF. What all kinds of the LSAs can be transmitted in which areas? (15%)
2. Please detail describes the software defined networking (SDN). (10%)
3. In too much redundancy case, it leads to which questions. (10%)
4. What are the benefits for separation Layer in data center network? (4 items) (10%)
5. For below case, there is an upstream packet to be transmitted to Dist-B, and the packet will be forwarded in VLAN2. How does avoid the packet flooding? (10%)



6. We design a DCN how to user layer2 or layer 3 protocols in Access, Distribution, and Core later. Please detail describe the reason. (10%)